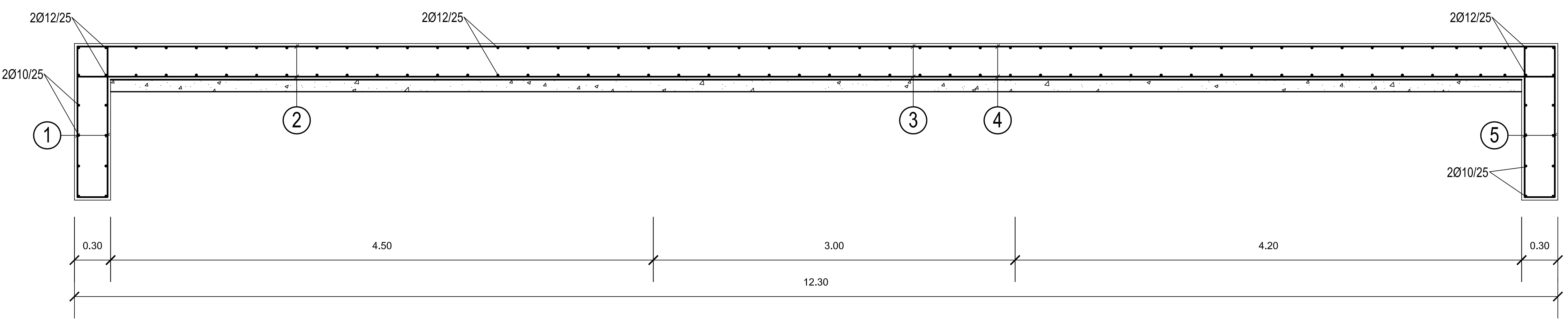
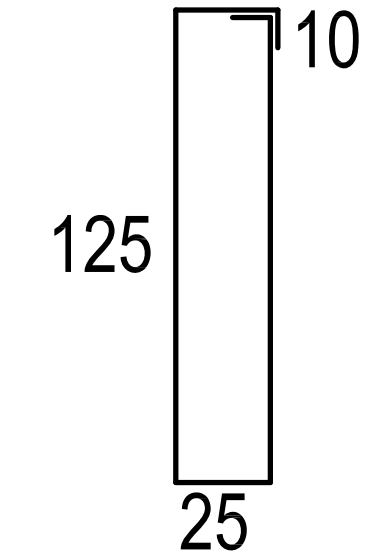
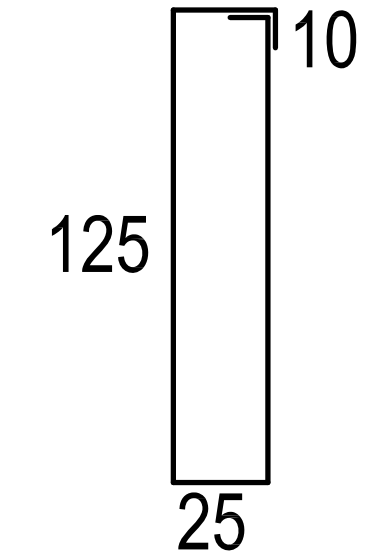


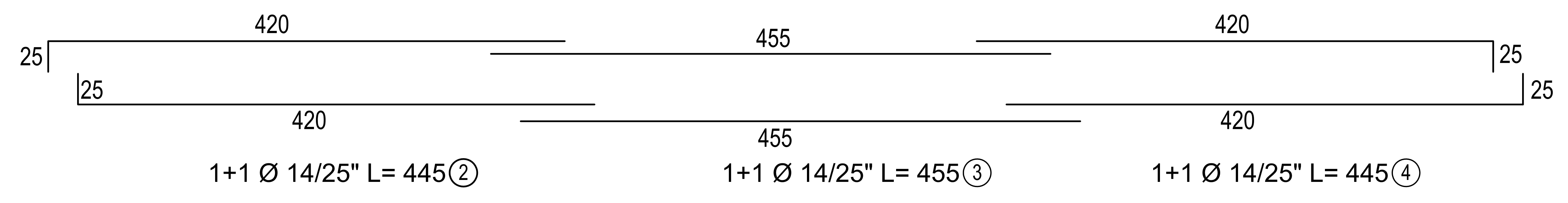
① 1 Ø 14/25" L= 320



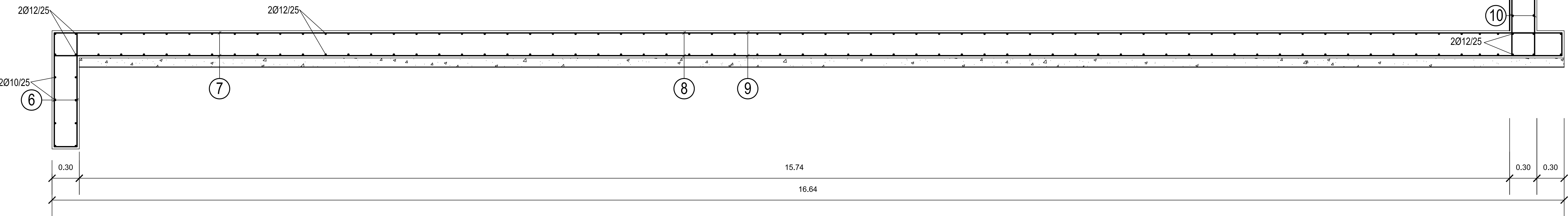
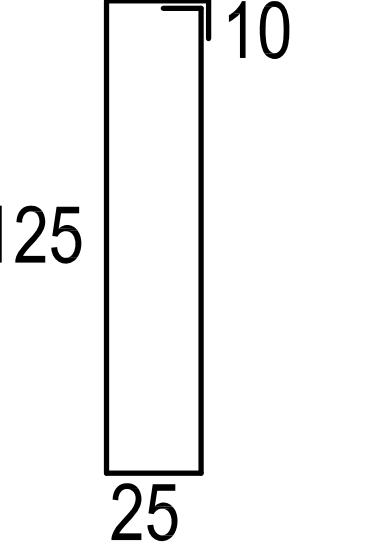
⑤ 1 Ø 14/25" L= 320



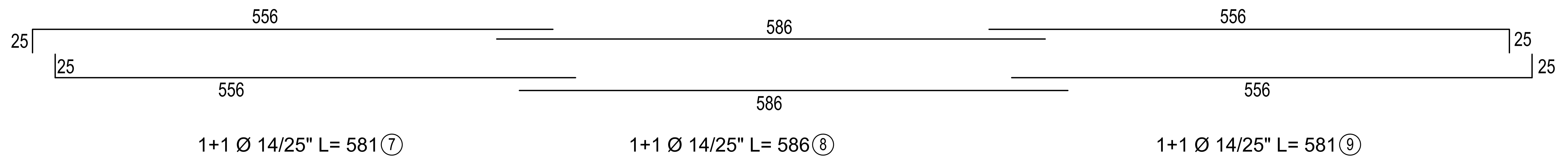
SEZIONE A - A'



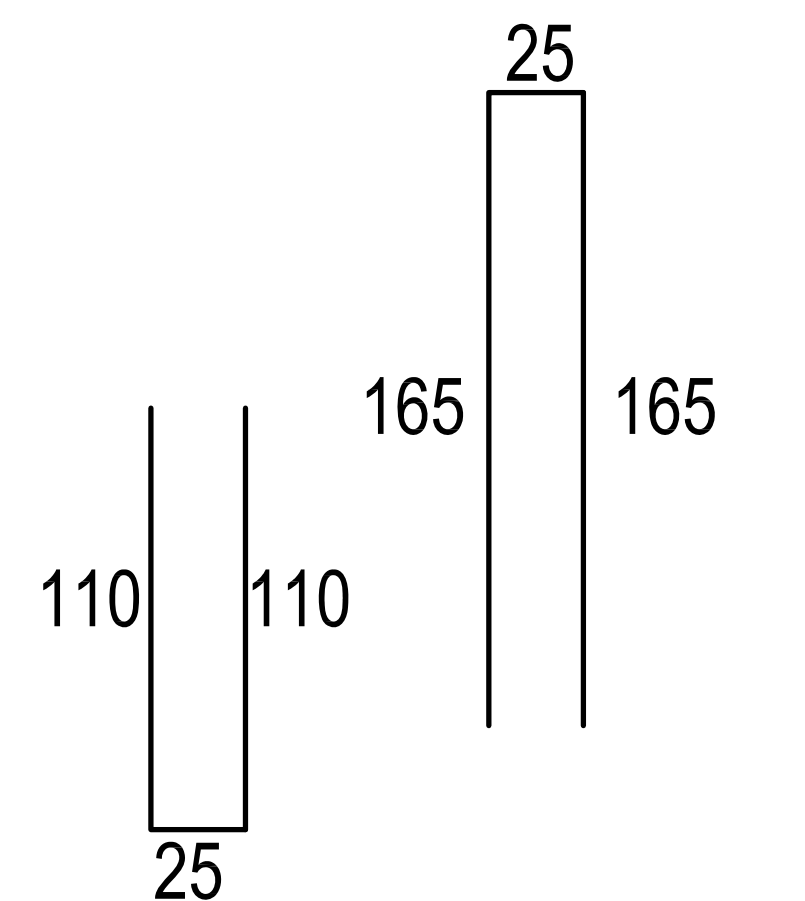
⑥ 1 Ø 14/25" L= 320



SEZIONE B - B'

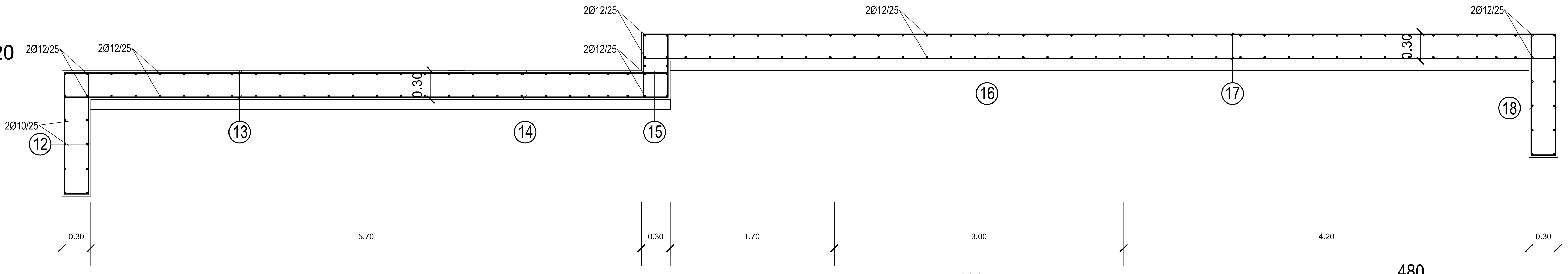
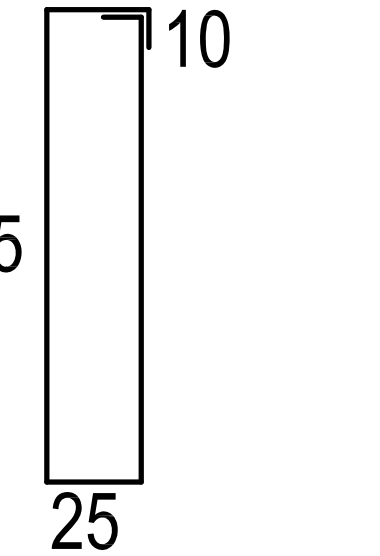


⑪ 1 Ø 14/25" L= 365

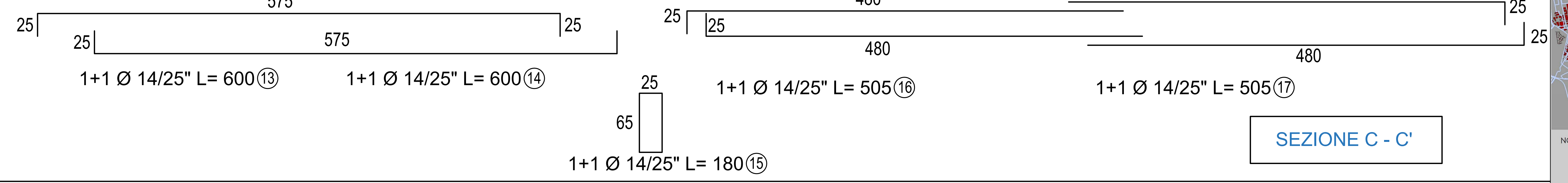


⑩ 1 Ø 14/25" L= 245

⑫ 1 Ø 14/25" L= 320



SEZIONE C - C'



Consorzio Bonifica Muza Bassa Lodigiana
via Nino Dall'Orto 4 - 26900 LODI tel. 0371-420189 r.a. fax 0371-50393
email: cmuza@muza.it

CONVENZIONE PER LA PROGETTAZIONE E LA REALIZZAZIONE DI "INTERVENTO DI COLLEGAMENTO SORGENTI DELLA MUZZETTA - TOMBONA E ADEGUAMENTO IDRAULICO A DIFESA DELLA FRAZIONE CALEPPIO" IN COMUNE DI SETTALA (MI)

Ragione Lombardia
Direzione Generale Territorio, Urbanistica e Difesa del Suolo
Consorzio Bonifica Muza Bassa Lodigiana

PROGETTO ESECUTIVO

tav.09c SORGENTI DELLA MUZZETTA - DUGNANI
Nuovo manufatto di scarico nello Scalmatore Tombona
Opere in c.a.a.

scala 1:20
EDIZIONE: LUGLIO 2018

Il Responsabile del Procedimento: dott. ing. Marco Chiesa
I Progettisti: dott. ing. Ettore Fantani; dott. ing. Marco Chiesa

NOTE GENERALI:

Sorgenti della Muzzetta - Tombona